



Mission 1200



Intelligent design for charging AGM, GEL, Flooded and Lithium batteries, the Mission 1200 Charger is available in on- and off-board configurations. Optional CAN bus communication ensures seamless machine integration and AC/DC cabling is completely customizable.



- High Reliability: Engineered using design for reliability. Validated for long service life in harsh operating conditions. Tested to perform reliably and durably in automotive applications. Manufactured in a world class facility specializing in high reliability solutions.
- Premium charging Quality: Charge profiles to precisely charge AGM, GEL, Flooded and Li-ion batteries. Developed in PowerFirst's battery lab to balance charge time, battery life and application requirements.
- USB datalog & Machine Integration: Assists machine troubleshooting with built - in charge cycle tracking. Download data / upgrade software through USB host port. Optional CAN bus communication enables deep machine integration, diagnostics and control.
- Global + Efficient: Capable of operating reliably on any single-phase grid worldwide. High-efficiency performance for electricity savings and shorter charge times. Active cooling enables optimal peak performance.

Mission 1200 Charger Specifications

Table with 4 columns: DC Output, 24 VDC, 36 VDC, 48 VDC. Rows include Maximum DC output voltage, Maximum DC output current, Maximum DC output power, Deep discharge recovery, Maximum C3 interlock current, Battery type, Reverse polarity, and Short circuit.

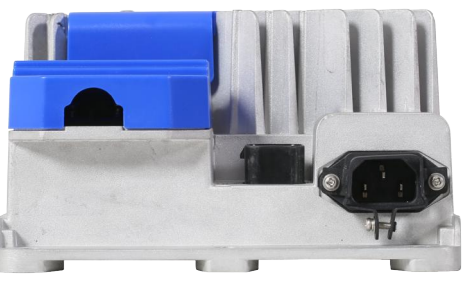
Table with 2 columns: AC Input, 85-270 VAC, 100-240 VAC, 50 / 60 Hz, 14.5 A, 13.4 A @ 100 VAC, 5.5 A @ 240 VAC, >0.99 @ 120 VAC, >0.98 @ 230 VAC.

Table with 2 columns: Regulatory, 90% at full load, 120 VAC, 48 VDC | 92% at full load, 240 VAC, 48 VDC, UL1564, CSA 107.2, EN 60335-2-29, FCC Part 15 / ICES 003 Class A, EN55011, EN 61000-6-4, EN 61000-3-2, EN 61000-3-3, EN 61000-6-2.

Table with 2 columns: Mechanical, L335 x W180 x H104 mm, 5 kg, IEC320 / C14 (requires country-specific cord), M6 threaded fasteners for ring terminals (field replaceable), Sealed (IP66) USB 2.0 Host Port (Type A) with dust cover, 6.4mm (1/4") diameter slots, Active cooling with fan (Variable speed, field serviceable, field replaceable).

Table with 2 columns: Environmental, IP66 (NEMA4), -40°C to +65°C, Derated at >40°C, -40°C to +85°C.

Visit epowerfirst.com/charger/mission-family/ to view the complete product datasheet. Copyright © 2022 PowerFirst Company Limited. All rights reserved.



- Highlighted Features: Optional CAN bus, RS485, PC, Wi-Fi, Bluetooth communication for machine integration or lithiumBMS. User friendly LED indicators for AC source, battery status, charging, error. Field programmable with up to 30 charge profiles. Auto-recharge for low voltage in maintenance mode. OEM customizable & field replaceable AC/DC cabling. Additional portable handle available.

