

Mission 900



Intelligent design for charging AGM, GEL, Flooded and Lithium batteries, the Mission 900 Charger is available in on- and off-board configurations. Optional CAN bus communication ensures seamless machine integration and AC/DC cabling is completely customizable.

Main applications:



High Reliability

Engineered using design for reliability. Validated for long service life in harsh operating conditions. Tested to perform reliably and durably in automotive applications. Manufactured in a world class facility specializing in high reliability solutions.



Premium charging Quality

Charge profiles to precisely charge AGM, GEL, Flooded and Li-ion batteries. Developed in PowerFirst's battery lab to balance charge time, battery life and application requirements.



USB datalog & Machine Integration

Assists machine troubleshooting with built - in charge cycle tracking. Download data / upgrade software through USB host port. Optional CAN bus communication enables deep machine integration, diagnostics and control.



Global + Efficient

Capable of operating reliably on any single-phase grid worldwide. High-efficiency performance for electricity savings and shorter charge times. Active cooling enables optimal peak performance.

Mission 900 Charger Specifications

Table with 4 columns: DC Output, 24 VDC, 36 VDC, 48 VDC. Rows include Maximum DC output voltage, Maximum DC output current, Maximum DC output power, Deep discharge recovery, Maximum C3 interlock current, Battery type, Reverse polarity, and Short circuit.

Table with 2 columns: AC Input and specifications. Rows include AC input voltage range, Nominal AC input voltage, Nominal AC input frequency, Maximum AC input current, Nominal AC input current, and Power factor.

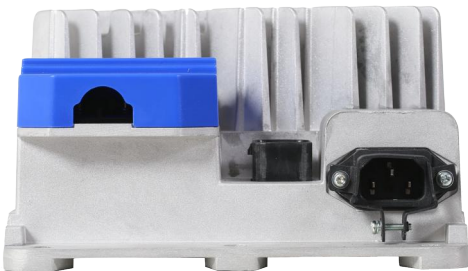
Table with 2 columns: Regulatory and specifications. Rows include Efficiency, Safety (LVD), Emissions (EMC), and Immunity (EMC).

Table with 2 columns: Mechanical and specifications. Rows include Dimensions, Weight, AC input connector, DC output connector, Service port, and Cooling.

Table with 2 columns: Environmental and specifications. Rows include Enclosure, Operating temperature, and Storage temperature.

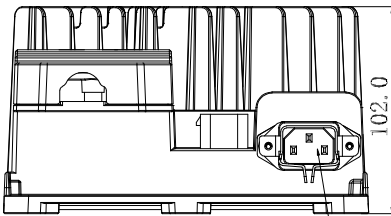
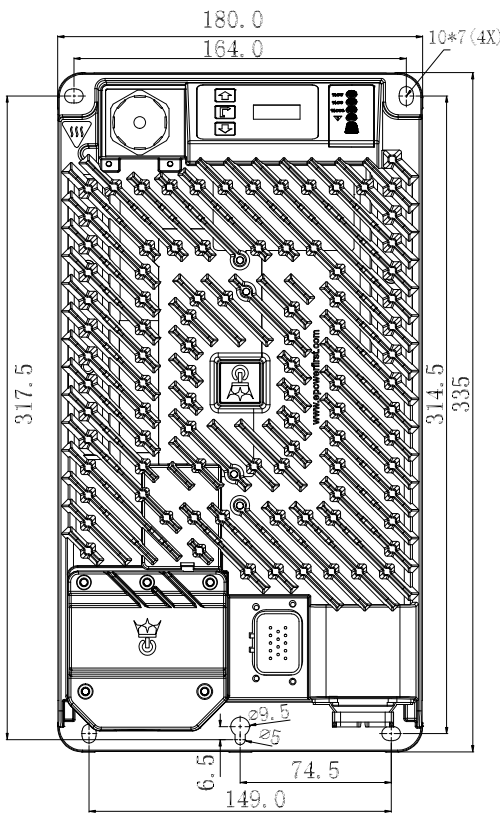
Visit epowerfirst.com/charger/mission-family/ to view the complete product datasheet.

Copyright © 2022 PowerFirst Company Limited. All rights reserved.



Highlighted Features:

- Optional CAN bus, RS485, PC, Wi-Fi, Bluetooth communication for machine integration or lithiumBMS.
- User friendly LED indicators for AC source, battery status, charging, error.
- Field programmable with up to 30 charge profiles
- Auto-recharge for low voltage in maintenance mode
- OEM customizable & field replaceable AC/DC cabling
- Additional portable handle available



AC CONNECTION

